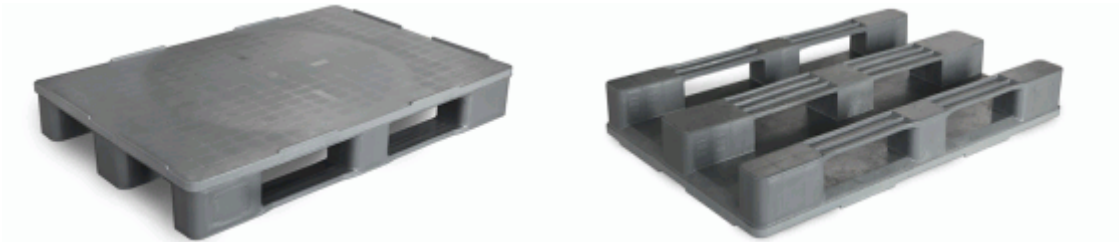


FOOD PALLET CHARACTERISTICS



Specifications:

- Static Load : 7.500 kgs (renforcée: 8.000 kgs)
- Dynamic Load : 1.200 kgs (renforcée: 1.500 kgs)
- Racking Load : 1.200 kgs (renforcée: 1.500 kgs) (ISO 8611)
- Weight : 17.5 kgs (renforcée: 20 kgs)

STANDAR or REINFORCED

800 * 1200 * 160 mm

General characteristics :

Fully closed pallet made out of HDPE (+ steel bars inside of the structure for the reinforced version)

3 runners

Color : fully grey

Maximum UV protection (degree 8)

Outside storage between -40°C and +70°C

Constant weight and size tolerances lower than 2 mm

Resistant to shocks and to most chemicals

Hygienic : easily washable with water spray or steam

More advantageous than wooden pallets:

Higher static and dynamic resistance properties than wood

No humidity stored, therefore no putrefaction

No migration or contamination towards the transported material

DIMENSIONS & DIAGRAMS:

